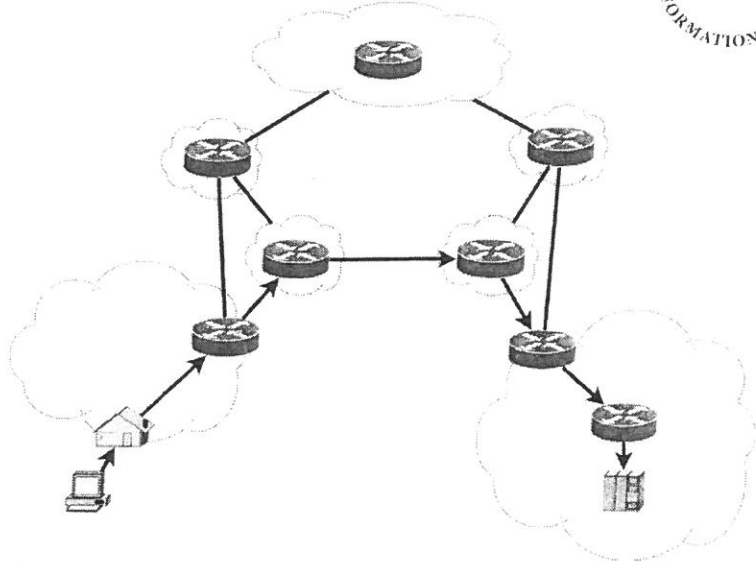


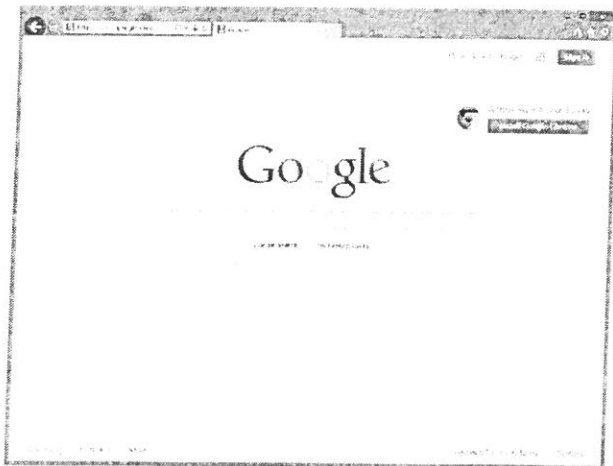
Internet Basics

The Internet is a global network connecting millions of computers. More than 100 countries are linked into exchanges of data, news and opinions. More than 2 billion people around the world use the Internet. No one actually owns the Internet, and no single person or organization controls the Internet in its entirety. The Internet is more of a concept than an actual tangible entity.



The Internet is not synonymous with World Wide Web. The Internet is a massive networking infrastructure. It connects millions of computers together globally, forming a network in which any computer can communicate with any other computer as long as they are both connected to the Internet. The World Wide Web, or simply Web, is a way of accessing information over the medium of the Internet. It is an information-sharing model that is built on top of the Internet.

A browser is a type of software application used to locate, retrieve and display content on the World Wide Web, including Web pages, images, video and other files. Browsers can be made by different companies, but they all do similar actions.



This is the Internet Explorer browser made by Microsoft. The controls at the top of the screen are arranged one way.



This is the Chrome browser made by Google. The controls at the top of the screen are arranged differently but they do the same things.

This is the **address box**. It displays the actual Internet address of the web page you are viewing.

Homepage are pages that automatically load when you begin the program.

You can type the address of any page you'd like to go to in this box.

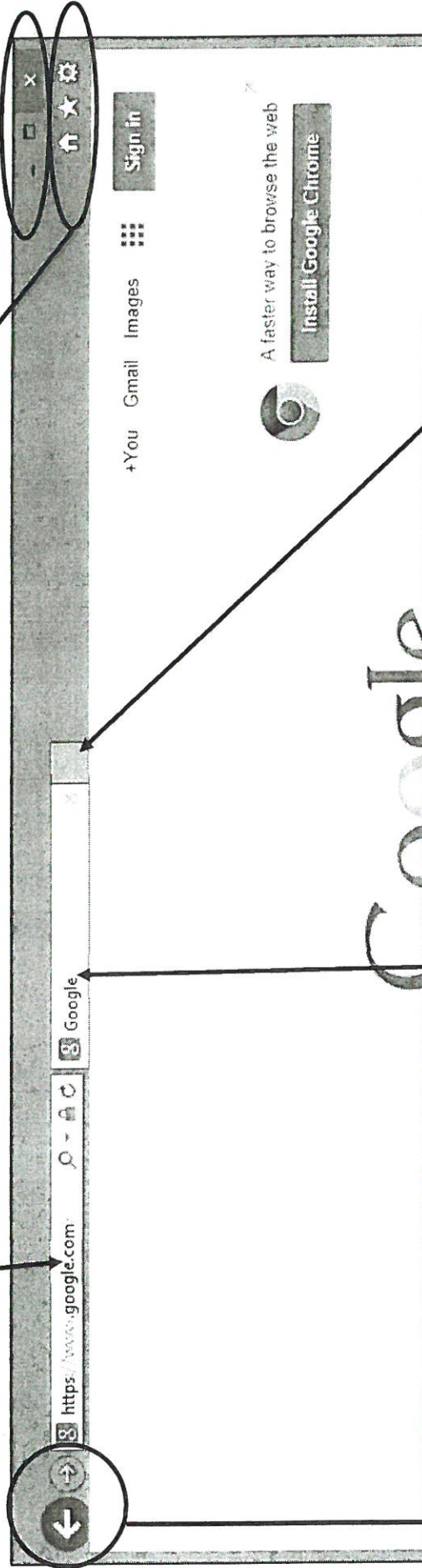
- Click inside the box
- Erase the existing content
- Type the new address
- Press the "Enter" key on your keyboard.

These buttons control features within the program:

- Home
- Favorites
- Settings

These buttons control your program window:

- Minimize
- Full Screen on/off
- Close program



Back button (left pointing arrow) takes you backwards one page that you've already seen. Each click takes you back one page.

Forward button (right pointing arrow) takes you forward through the pages you've already seen. Each click moves you forward one page.

This is a **Tab**. It is one single web page within the browser program. You can have several Tabs running in your program. You can move between the pages by clicking once on the Tab and it will display that particular web page. The "x" in the right corner closes just the one Tab. When you close the last Tab, the entire program closes.

Clicking this partial tab will open a **New Tab** that will let you go to a completely separate web page.